



ichia

ICHIA TECHNOLOGIES, INC.

Act with Purpose Impact with Vision

Earning Conference

2025.08.07



Agenda

Times	Content
14:00~14:30	Registration
14:30~15:10	Presentation for 2Q25 Operation Strategy & Business plan
15:10~15:30	Q&A
15:30	Ending

Disclaimer

- **This newsletter and the related information released at the same time contain predictive information obtained from the company's internal and external sources.**
- **The actual operating results, financial conditions and business prospects of the company in the future may differ from the estimation implied by these predictive information. The reasons may come from various risks that the company cannot control.**
- **The outlook for the future in this newsletter reflects the company's views on the future so far. The company is not responsible for updating the views that changes all the time.**



Presentation for 2Q25 Operation



Consolidated Statements of 2Q/2025

Unit: In NT\$ thousands

	2025Q2		2025Q1	
	Amount	%	Amount	%
Net Sales	2,800,269	100	2,438,830	100
Cost of Sales	2,241,861	80	2,006,451	82
Gross Profit	558,408	20	432,379	18
Operating Exp.	304,521	11	246,516	10
Gain From Operations	253,887	9	185,863	8
Non-Operating Income & Exp.	10,578	0	24,232	1
Earnings Before Income Tax	264,465	9	210,095	9
Incone tas expenese	57,756	2	34,970	2
Net profits flor the year	206,709	7	175,125	7
Earnings per share	0.68		0.58	

2025年第二季度YoY合并损益

Unit: In NT\$ thousands

	2025Q2		2024Q2	
	Amount	%	Amount	%
Net Sales	2,800,269	100	2,383,101	100
Cost of Sales	2,241,861	80	1,951,425	82
Gross Profit	558,408	20	431,676	18
Operating Exp.	304,521	11	258,877	11
Gain From Operations	253,887	9	172,799	7
Non-Operating Income & Exp.	10,578	0	37,412	2
Earnings Before Income Tax	264,465	9	210,211	9
Incone tas expensese	57,756	2	29,636	1
Net profits flor the year	206,709	7	180,575	8
Earnings per share	0.68		0.60	

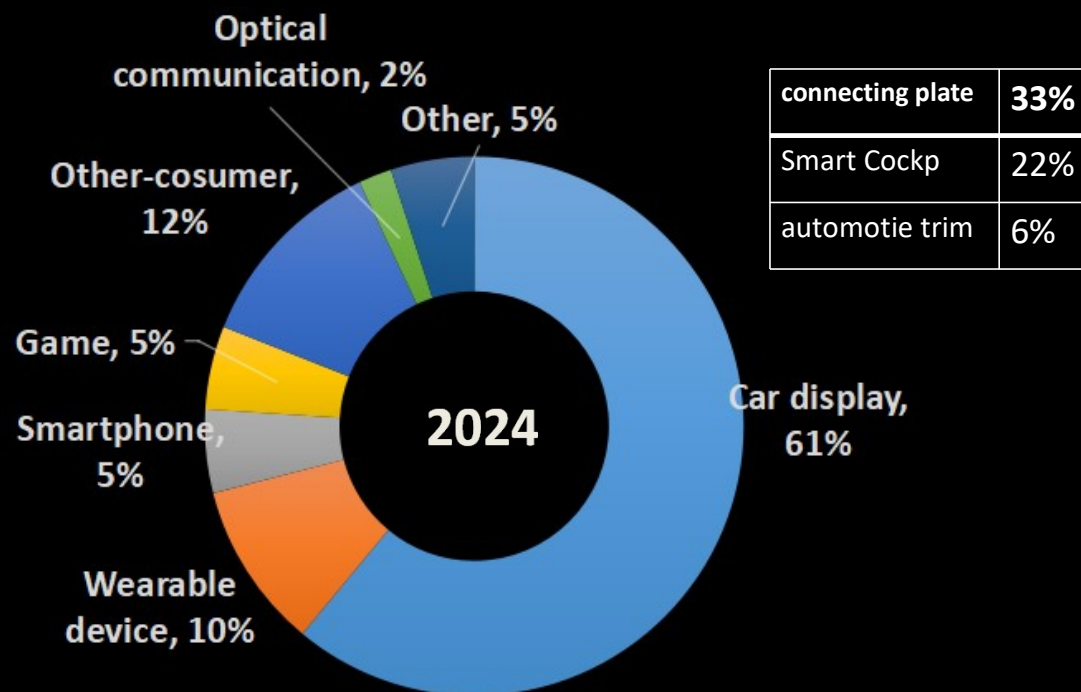
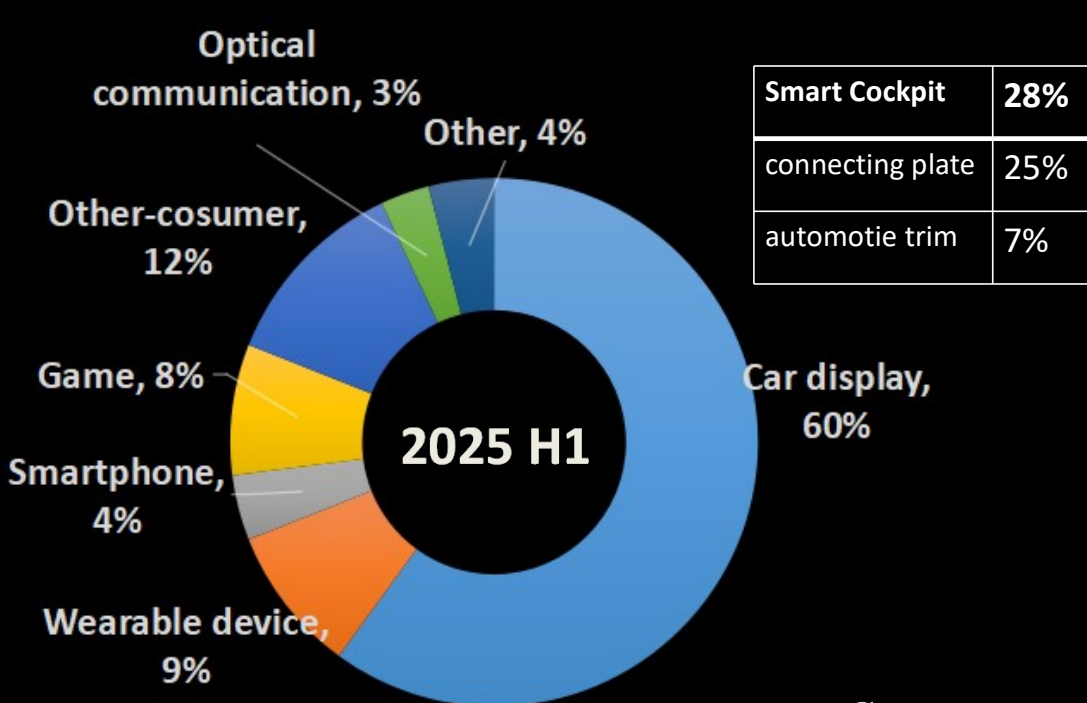


Consolidated Statements of 1Q~2Q/2025

Unit: In NT\$ thousands

	2025Q1~Q2		2024Q1~Q2	
	Amount	%	Amount	%
Net Sales	5,239,099	100	4,382,541	100
Cost of Sales	4,248,312	81	3,675,849	84
Gross Profit	990,787	19	706,692	16
Operating Exp.	551,037	11	451,725	10
Gain From Operations	439,750	8	254,967	6
Non-Operating Income & Exp.	34,810	1	62,222	1
Earnings Before Income Tax	474,560	9	317,189	7
Incone tas expense	92,726	2	45,751	1
Net profits flor the year	381,834	7	271,438	6
Earnings per share	1.26		0.90	

Revenue Breakdown

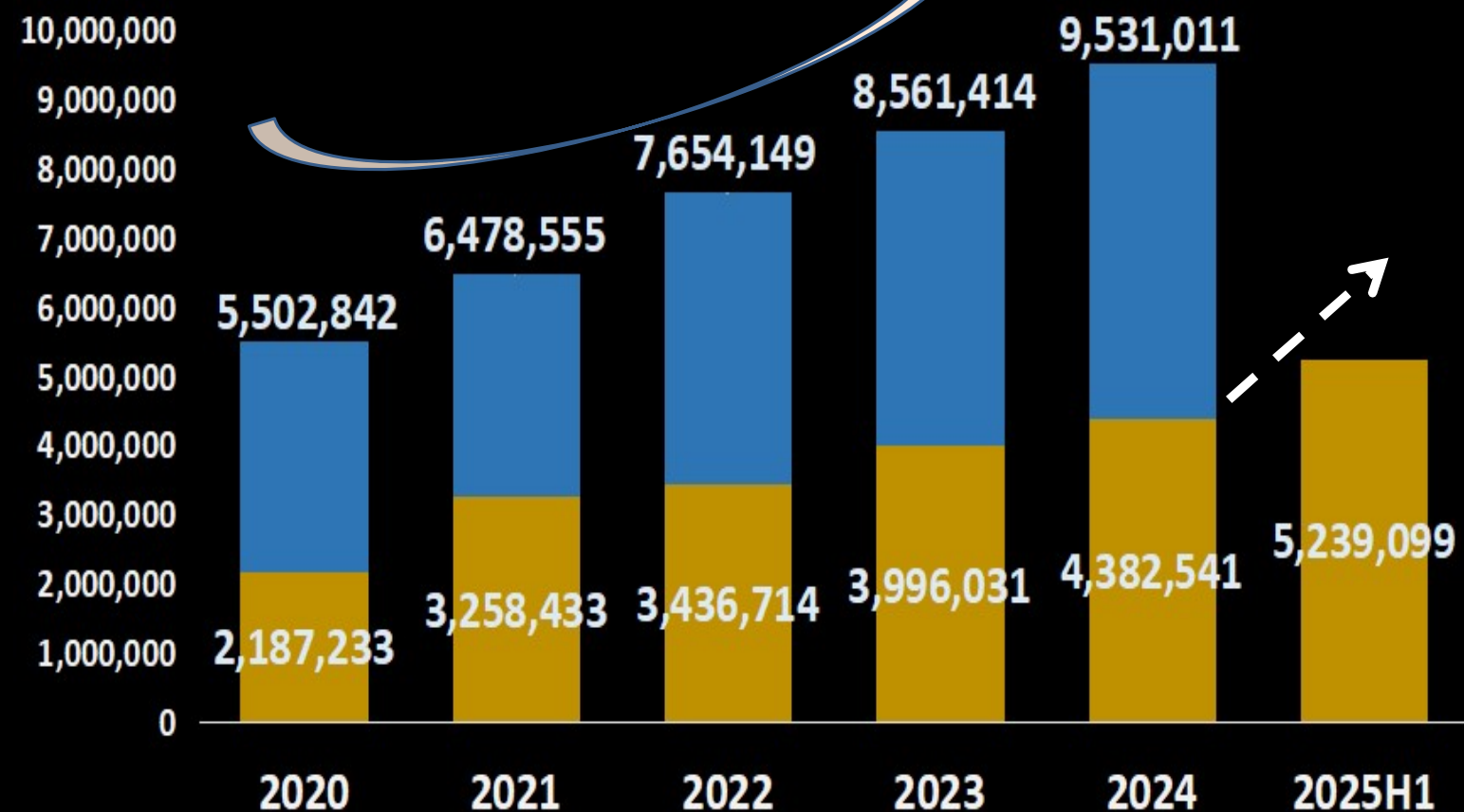


• Game	8%	+3%
• Optical communication	3%	+1%
• automotive products	60%	-1%
• Wearable device	9%	-1%
• Smartphone	4%	-1%

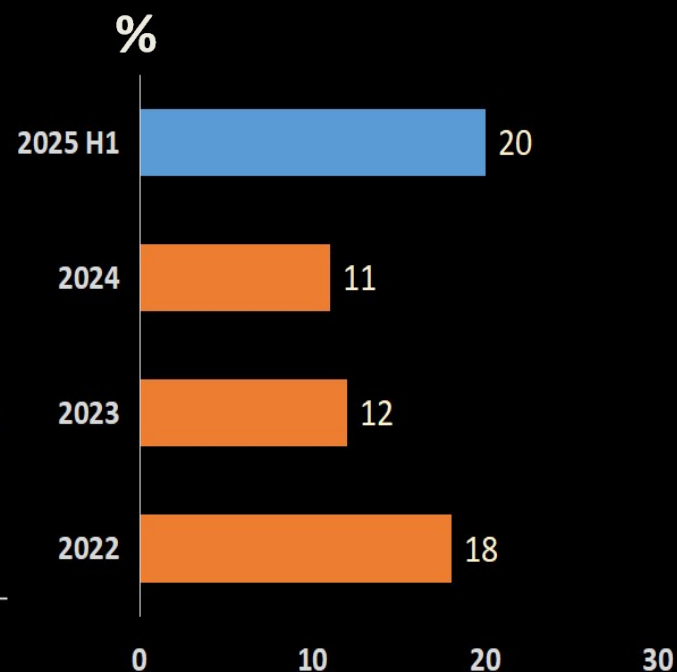


ICHIA Net Sales 2020~2025H1

Unit: In NT\$ thousands



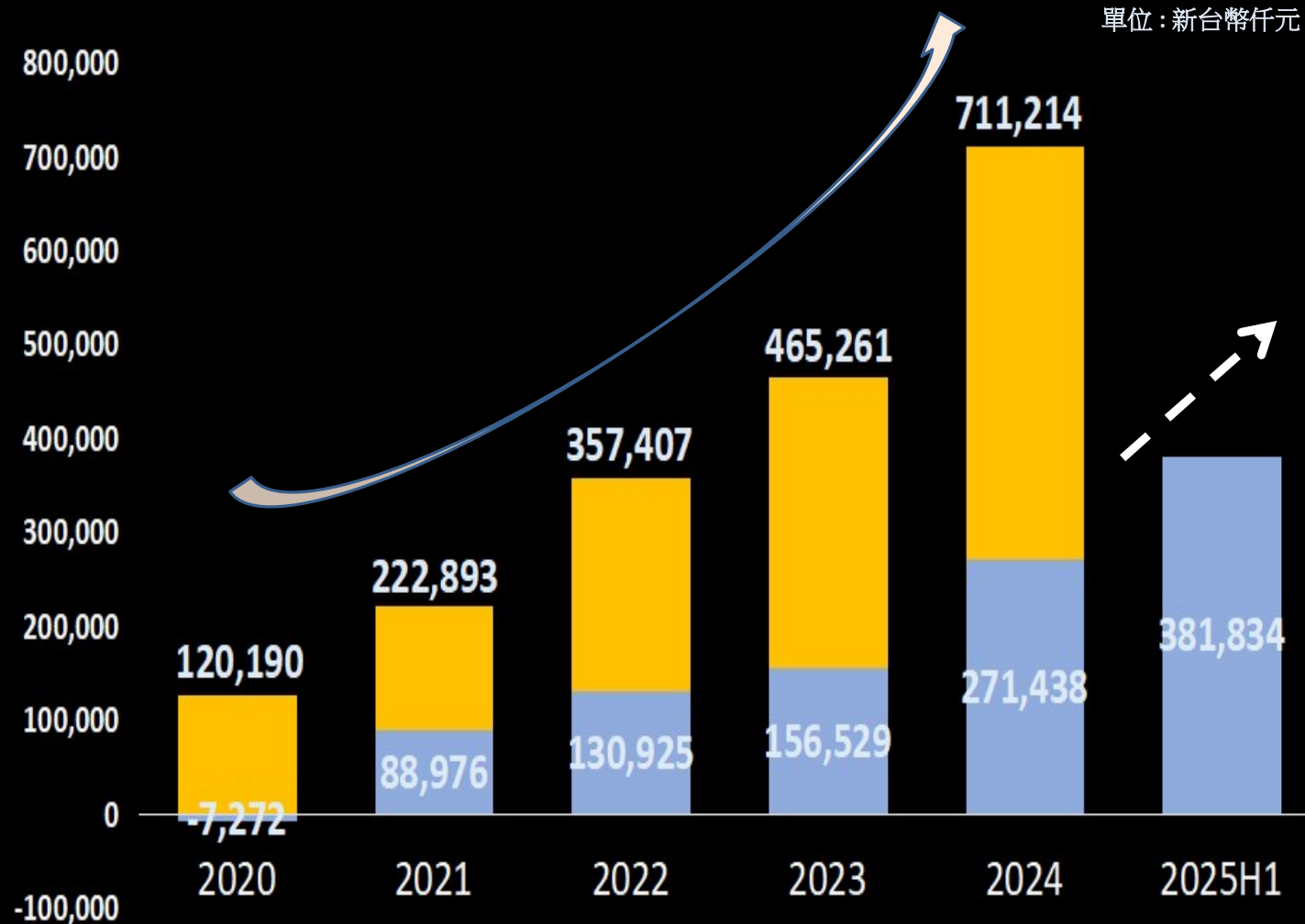
2025 H1 YOY 20%



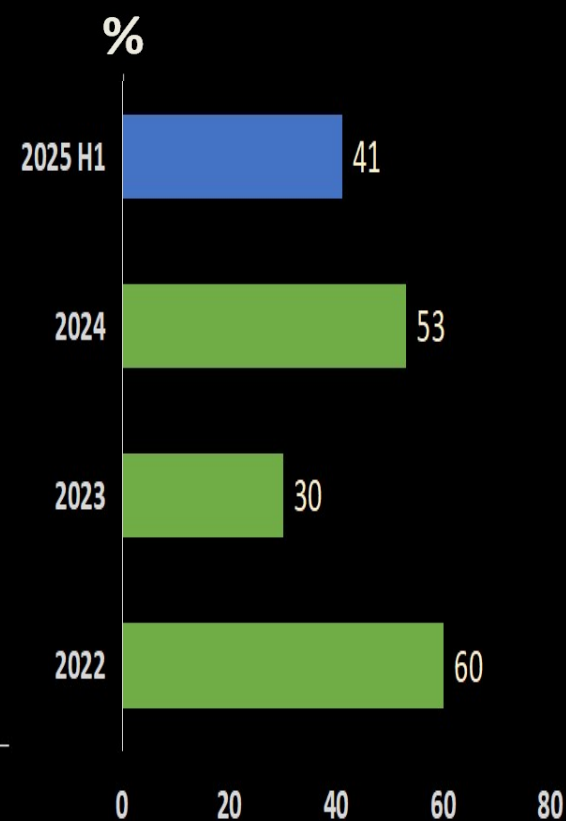


ICHIA Net profits for the year

單位：新台幣仟元



2025 H1 YOY 41%



ichia

Strategy & Business plan

Operating Results Review and Future Outlook

- 1 Operating income in the first half of 2025 increased by 20% compared with the same period last year, which is better than the original expectation.
- 2 Operating income will continue to grow in 2025, Proportion of operating revenue from smart cockpits(PCBA)>28%
- 3 Malaysia Second Factory Phase 1, it is expected to be officially put into production in October(Automotive trim&Optical communication)
- 4 We have completed the construction of a design center for heat dissipation modules in our Linkou factory in Taiwan, the production equipment has been completed in March and is expected to start production in June and mass production in September.
- 5 Subsystem module products(EMS/IMS/TMS)Has obtained the qualification of qualified supplier for international customers(AVL)and obtain orders for new products from customers, The benefits will gradually be realized from 2026 to 2027(15%+).

Product technology and application blueprint(All Module Solutions)

端

A

I

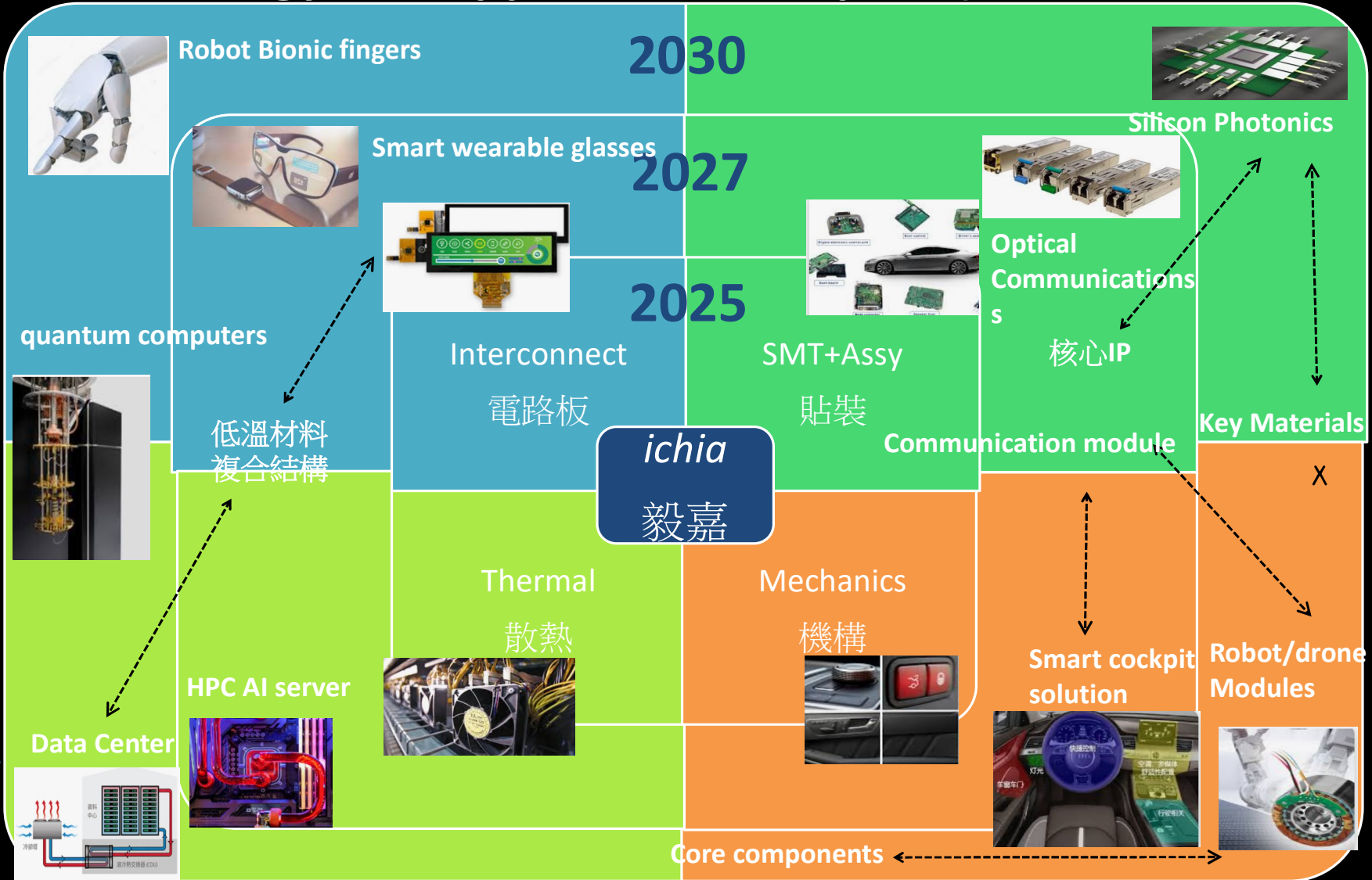
雲

管

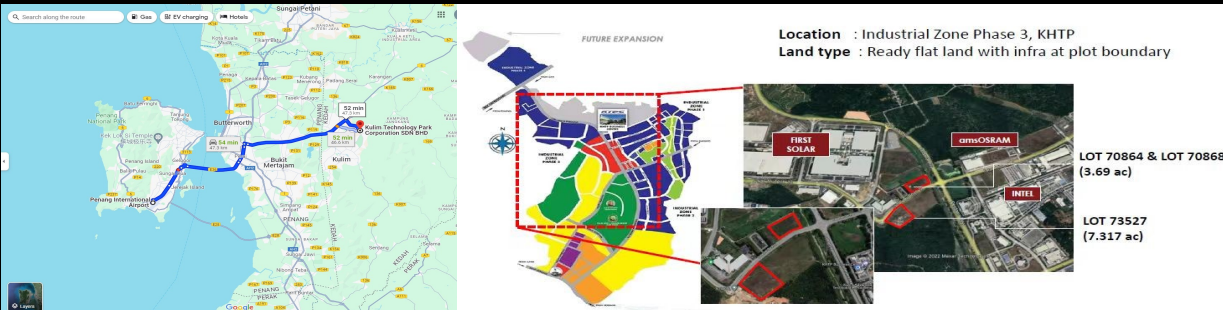
I

A

端



Malaysia M2 new plant construction progress report



Investment amount:

- USD100million(Phase I Plant)
- The land for the second phase has been acquired, and production and customer orders are being planned.

Product Type:

- Electronic components(FC Bonding/mSAP)
- Mechanism components(IME/IML)
- System Module (AMS)

Product Application:

- Data Communications(Datacom)
- Automotive products
(Automotive trim & Smart cockpits)
- Energy Storage(BMS)

Estimated time for mass production:
October 2025

Operational goals and future prospects

- **A module solution provider.**
Become a supplier of subsystem module solutions.
 - Diversified product range, Three major module solutions(SBU), Revenue share in 2030>40%
- **Continued global deployment. Accelerate global production layout.**
 - Expanding production base in Malaysia, Revenue share in 2030>40%

Global

NTD \$1B+

Capex/Year

45%+

Rev% of OOC

New Technology & New Products

30%+

AI related

50%+

Ratio of NTNP
revenue

The conerstone for the Sustainability



- ✓ National Green Factory
- ♻️ GHG Emissions ↓37% (Scope 1 & 2)
- ⚡ Green Power Usage: 20%
- ♻️ Recycling Rate: 63%
- 💧 Water Intensity ↓31%

- 🌍 RBA Certification
- 🏆 EcoVadis Silver Medal
- 🤝 Member of UN Global Compact
- 🌱 Member of Taiwan Climate Partnership
- 📊 CDP Participant
- 👤 Employee Stock Ownership Trust



ichia

Electrical Module Solution

EMS Technology Roadmap

Automotive (Display)

PCBA(1 Stage) + PCB(2 Stage) = Total Solution

2022-2024

2025-2030

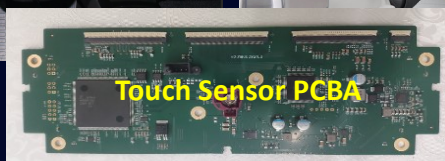
CID

Cluster

RES

Unified Digital Cockpits

HUD



Touch Sensor PCBA



Power Work PCBA

Datacom (Transceiver)

2022-2023

2025

2026+

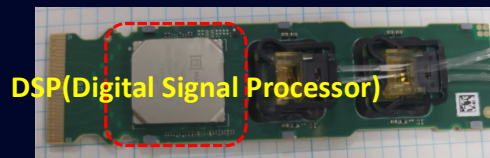
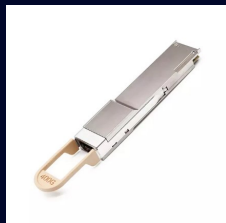
LPO Solution

400G

800G

1.6T

3.2T



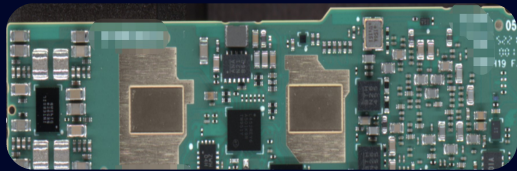
DSP(Digital Signal Processor)



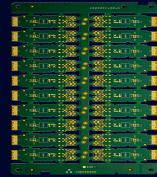
CPO Solution

Only 10% Penetration**

EMS Malaysia Factory for Datacom Set Up



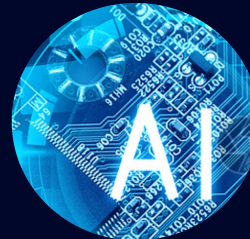
Flipchip PCBA (1 Stage)



MSAP PCB(2 Stage)

EMS

IMS

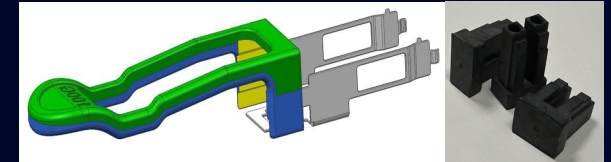


TMS

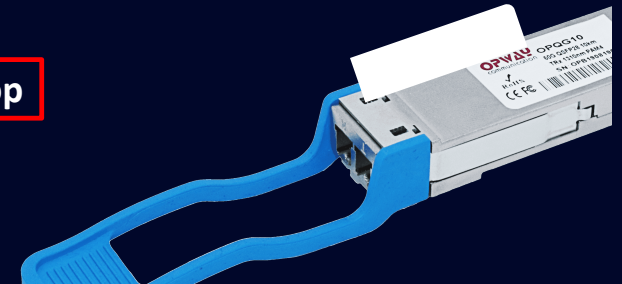
One-Stop Shop



Thermal for Shell



Pull tab & Dust plug



Semi-Module & Transceiver Assembly

Integrated Module Solution


Tier1.5 -IMS 2025 Focus Products

① Switch Module

② Optical Module

③ IML/IME



Module	① Switch Module	② Optical Module	③ IML/IME
Highlight	<ul style="list-style-type: none"> • Mechanical switch • Touch switch • Force sensing switch 	<ul style="list-style-type: none"> • Switch backlight • Ambient light • Interior Lamp 	<ul style="list-style-type: none"> • IML decoration • IME touch panel • Sustainable material
Image			

ichia IMS 2025 Performance

EV	Exterior Switch Module	<ul style="list-style-type: none">Q1 PO AwardQ4 Transfer to Malaysia	<ul style="list-style-type: none">Q2 SOP in Malaysia	
	Touch Sensor	<ul style="list-style-type: none">Q1 PO Award	<ul style="list-style-type: none">Target: Module PO in Malaysia	
	Switch Sensor	<ul style="list-style-type: none">Mockup Sample DeliveryFinalize Design Solution	<ul style="list-style-type: none">Target: Module PO in Malaysia	
EURO Teir1	Touch Switch Module	<ul style="list-style-type: none">Q2 PO Award	<ul style="list-style-type: none">Q4 Sop in Suzhou	
	Local Dimming	<ul style="list-style-type: none">Q3 Award	<ul style="list-style-type: none">2028 SOP	

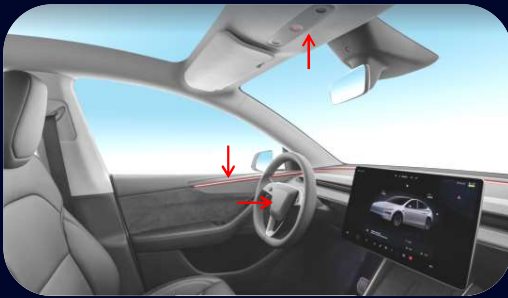


IMS Technologies & Marketing Plan

1E USD

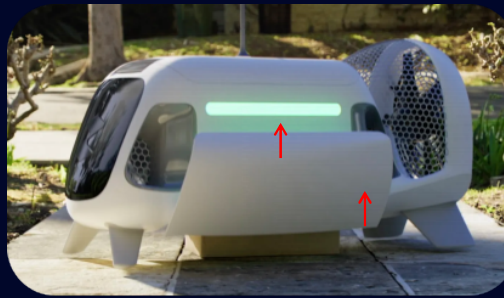
Automotive

- Switch Sensor
- Optical Lighting
- MEMS Control Unit



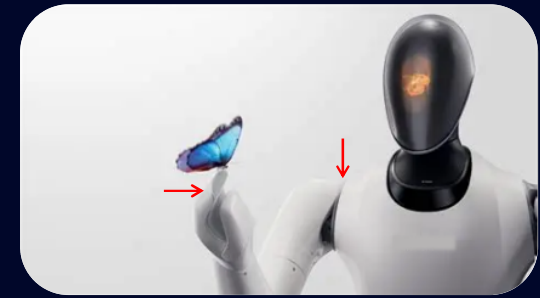
Commercial Drones

- Drone Transport Accessories
- Aviation Lights
- Motor Control System



Robot

- HMI for Robotics
- Tactile Force Feedback
- Robot Joint Control System



Marketing Direction

- MEMS Control Unit
- EV --> Global Car
- Tier1

Thermal Module Solution

Product Line 1



Traditional module

- Production line set up in Q3
- Heat pipe / High power VC

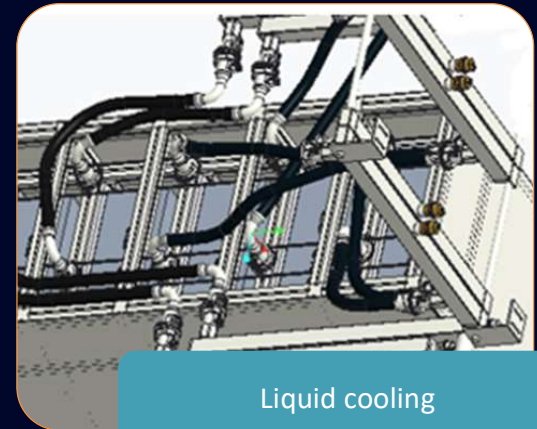
Product Line 2



Optical Transceiver

- 2025: 400G / 800G
- 2026: 800G / 1.6T

Product Line 3



Liquid cooling

- Production control system
- Customized cold plate

Line 1

Rev% 2025: 56%

Traditional module

- Heat pipe / Air cooling
- High power VC & 2 Phase



- Industrial control
 - Shipments are growing steadily



- Top 5 ODEM
 - Co-work for in AVL
 - Certified: 1



- Top 5 Brand name
 - To approach in AVL
 - On the process: 1

Line 2

Rev% 2025: 8%

Optical Transceiver

- 2025: 400G / 800G (U.S.)
- 2026: 800G / 1.6T (U.S.)

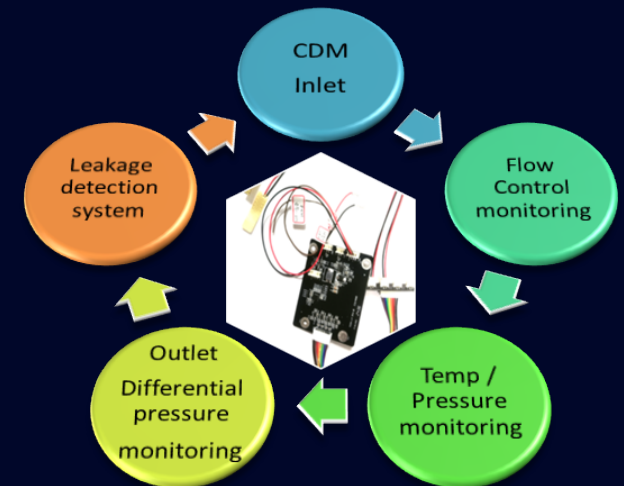
- For OSFP 800G
 - 2 x FR4 - **Q4.25/ MP*2**
 - DR8 - **Q1.26/ MP*2**
- Extra riding module
 - Under development
- 1.6 → 3.2T OBO
 - Under development
 - H-Level Switch (**Liquid cooling**)

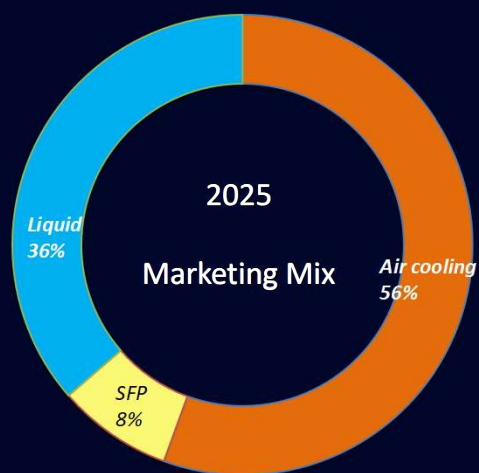
Line 3

Rev% 2025: 36%

Liquid cooling

- Production control system
- Customized cold plate





2025

2030

Employer Brand Revamp

Integrity
Commitment
Humanity
Innovation
Achievement



To be a pivotal partner
in the niche market



Act with Purpose Impact with Vision

歡迎聯繫

Eric Tseng 曾恭勝 *Spokesperson*

Tel : +886-3-3973345 ext. 18003

E-mail : ichia.ir@ichia.com

Allen Huang 黃彥翔 *Investor Relations*

Tel : +886-3-3973345 ext. 11133

Mobil: +886-987-816-292

E-mail : Allen.Huang@ichia.com

✻ *Company Website*

✻ *Financial details*



Thank You

Integrity

Commitment

Humanity

Innovation

Achievement